



St.GERMAIN
a place like no other



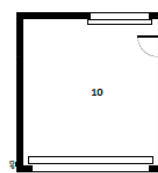
LOT 901 5 🚗 2 🏠 2 🚗

LAND SIZE: 607SQM

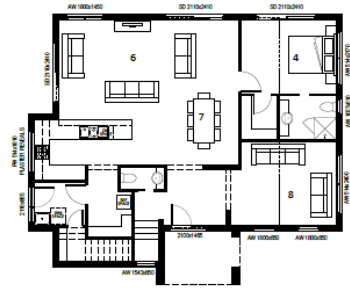
FRONTAGE: irreg

ARIA 27 \$637,990

- > Site cost allowance
- > Facade as shown
- > Flooring throughout
- > 600mm Stainless steel appliances
- > Double glazed windows
- > Motorised garage door with remote
- > More included in our Zest Standard inclusions



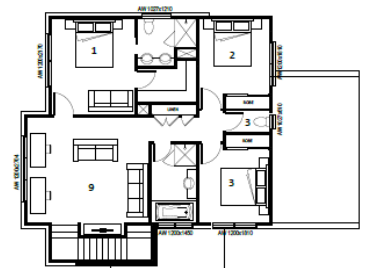
GARAGE FLOOR PLAN



GROUND FLOOR PLAN



UPPER FLOOR PLAN - OPTION 1 (4 BEDROOM - 1 LIVING)



UPPER FLOOR PLAN - OPTION 2 (3 BEDROOM - 2 LIVING)



Call Sienna Homes on 1800 SIENNA to discuss your new home at St Germain. stgermain.net.au

Facade shows items not included, front landscaping, driveway, external lighting, decking or tiled porch, planter boxes and potted plants, internal furnishings, feature fencing and letterbox. For complete list of inclusions please refer to siennahomes.com.au