



St.GERMAIN
a place like no other



LOT 907 4  2  2 

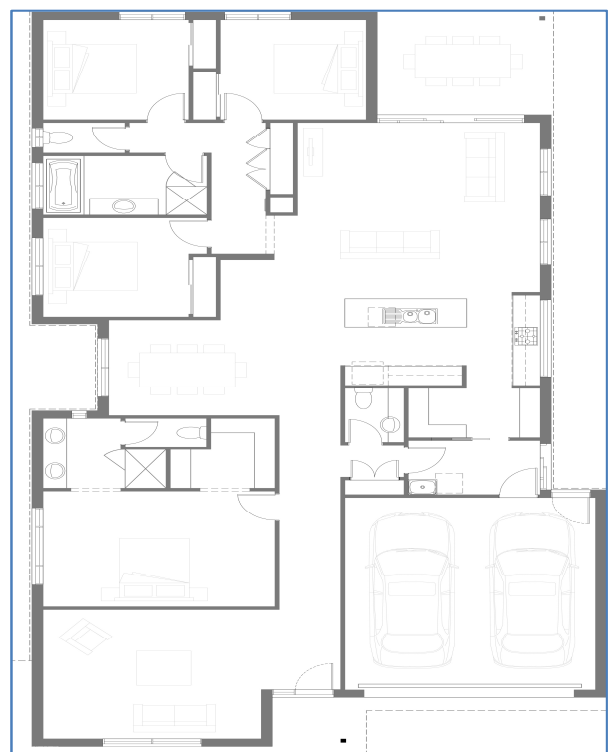
LAND SIZE: 560SQM FRONTAGE: 12.81M

JASPER **\$609,990**

- > Site cost allowance
- > Facade as shown
- > Flooring throughout
- > 600mm Ariston Stainless steel appliances
- > 40mm stone benchtops to kitchen
- > Dishwasher
- > Double glazed windows
- > Motorised garage door with remote
- > More included in our Verve Standard inclusions



Call Sienna Homes on 1800 SIENNA to discuss your new home at St Germain.
stgermain.net.au



Facade shows items not included, front landscaping, driveway, external lighting, decking or tiled porch, planter boxes and potted plants, internal furnishings, feature fencing and letterbox. For complete list of inclusions please refer to siennahomes.com.au