



St.GERMAIN
a place like no other



LOT 901 4 🚗 2 🏠 2 🚗

LAND SIZE: 607SQM

FRONTAGE: CNR

BELLEVUE 346

\$678,800

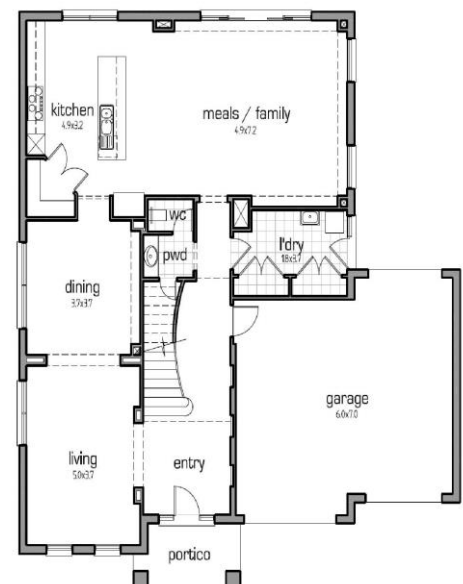
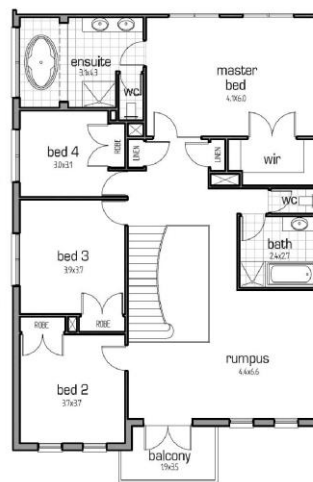
- > 6 Star Energy Rating
- > Concrete Roof Tiles
- > Face Brickwork & Mouldings to Front Façade
- > Vinyl Wrap Cabinetry
- > Ceramic Tiles to Entry, Kitchen, Meals, Family & wet areas
- > Carpet to Living, Dining, Rumpus & Bedrooms
- > Sectional Panel Lift Garage Door with Remote
- > Quality Stainless Steel Appliances

#Conditions pending site costs



Display address: Tallrush St, Clyde North – Berwick Waters Estate. Open Hours: Sat – Wed 12noon – 5pm
Head Office Ph: (03) 5941 4944 E: admin@cheviot homes.com.au www.cheviot homes.com.au

Call **Erik Lange** on **0412 698 485** or email **erik.lange@cheviot homes.com.au** to discuss your new home at St Germain. stgermain.net.au



DISCLAIMER: Cheviot Homes Pty Ltd reserves the right to alter inclusions as part of ongoing product development without written notice. Government building guide lines may apply. Site specific building controls and/or conditions may vary standard inclusions to satisfy foundation designs, 6 star energy requirements and BAL ratings. All package pricing is dependent upon current land availability and specific site costs that may apply to each individual allotment. Unless specified, all house and land packages do not include government stamp duty and/or associated legal costs. All package prices quoted are based on standard inclusions and do not include and current promotions and/or additional options that may be available or offered at our display centre.