



HOUSE & LAND

\$589,159*

ST GERMAIN – CLYDE NORTH

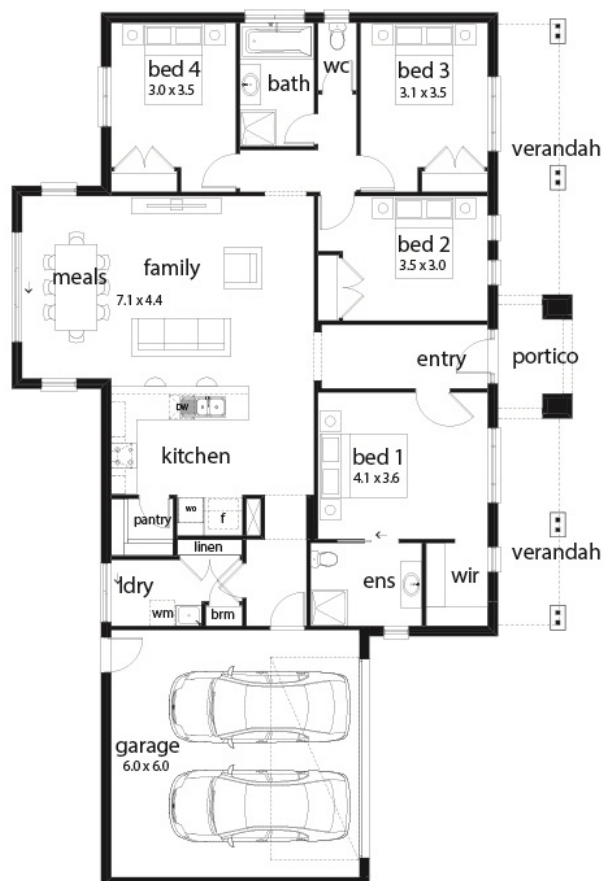
Lot 901 TBC
Clyde North VIC 3978

🛏️ 4 🗑️ 2 🚗 2 🚲 1

Northampton 22 Province Facade
(Aspirations)

Home size: 23.45sq Land size: 607m²

- ✓ Aspirations Inclusions
- ✓ BAL
- ✓ Site Costs Allowance
- ✓ Recycled Water
- ✓ NBN Connection
- ✓ Double Garage
- ✓ Sectional Garage Door
- ✓ Remote control to garage door
- ✓ Flyscreens
- ✓ Stainless Steel Appliances
- ✓ 900mm Appliances
- ✓ Ducted Heating
- ✓ Floor Coverings
- ✓ 35 m² of Concrete Drive and Paving
- ✓ Current Promotion



Go to dennisfamily.com.au or call
1800 DENNIS for more information.

Alice Wang 0438 544 638
Reference HL0020579