



**St.GERMAIN**  
a place like no other



## ELEMENT EIGHT DEVELOPMENT GROUP

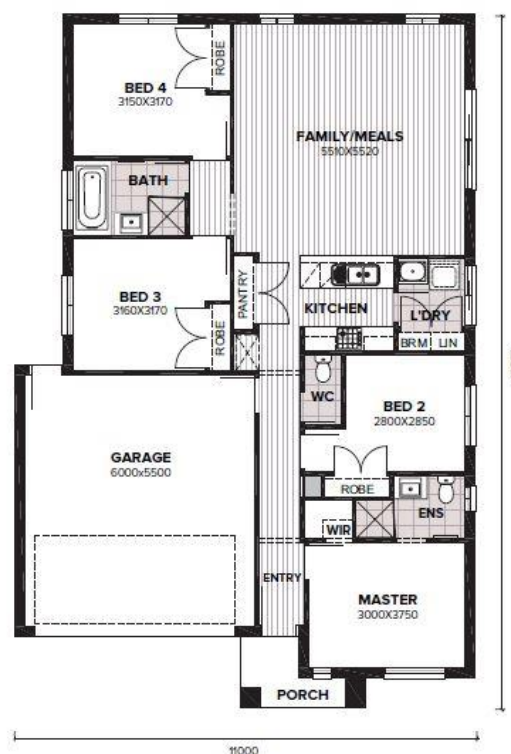
# \$522,150

## GENEVA 17

LOT 1739 4 🚗 2 🏠 2 🚗

LAND SIZE: 288SQM FRONTAGE: 12.5M

- Fixed Standard Site Cost
- Provide Full Landscaping to House - Front and Rear
- Provide Full Fencing
- Colour Sealed Concrete Driveway and Paths
- 20mm Composite Stone Benchtop
- Dishwasher - Stainless Steel
- Split System Air Conditioner (cooling only) to Living
- Flooring throughout
- Downlights
- Letterbox
- Window Coverings throughout
- Premium Facade - 4 Facades to Choose From
- Flyscreens
- Alarm System
- Double Gargage with Remote Controller



**EM8**

Element Eight Development Group

Call Olivia Mo on 0431864968 to discuss your new home at [StGermain.stgermain.net.au](http://StGermain.stgermain.net.au)

The builder reserves the right to amend specification and price without notice. All plans and facades are indicative concepts and are not intended to be an actual depiction of the building. Fencing, paths, driveway or landscaping are for illustration purposes only. All dimensions are approximate, refer to contract documentation for details. The First Home Owners Grant is a government incentive and is subject to change.