



**St.GERMAIN**  
a place like no other



**LOT 1424** 4 2 2

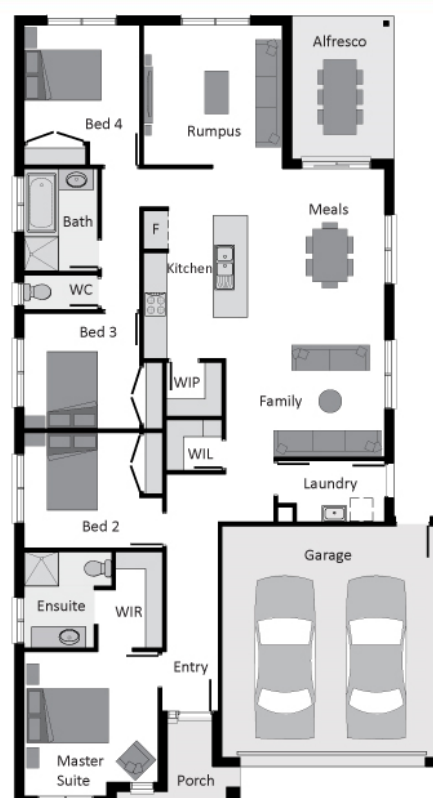
LAND SIZE: 400SQM FRONTAGE: 12.5M

## Jerez 225 \$567,689

- > Fixed Site Costs
- > Upgraded Façade – Sarin
- > Estate Covenants, Guidelines & Statutory Costs
- > Cat.1 carpet with a choice of Timber laminate or Ceramic tile flooring
- > 20mm Caesarstone to Kitchen, Ensuite & Bathroom
- > 900mm appliances
- > Stainless Steel Dishwasher
- > Evaporative Cooling Unit
- > 15 LED Downlights
- > Flyscreens and Window Locks
- > 6 star energy rating\*in any orientation
- > Alfresco dining
- > Coloured concrete to driveway and porch up to 36m<sup>2</sup>



Call Molly Trapnell on 0403 242 060 to discuss your new home at St Germain.  
[stgermain.net.au](http://stgermain.net.au)



©Copyright. Reproduction without authorisation from Bentley Homes (Aust) Pty Ltd is prohibited. All images and plans are for illustrative purposes and should only be used as a guide only. Refer to the working drawings for complete dimensions. Based on standard home and builder's preferred siting. Excludes legal fees relating to building contract and excludes land acquisition charges. Bentley Homes (Aust) Pty Ltd reserves the right to alter prices & specification without notice.