



St.GERMAIN
a place like no other

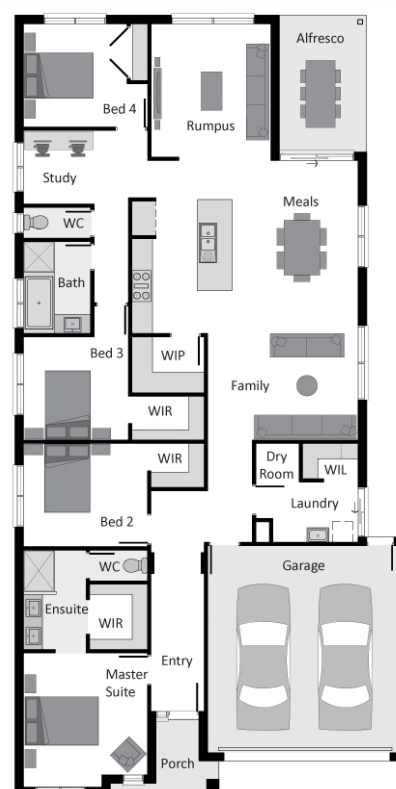


LOT 1424 4 2 2

LAND SIZE: 400SQM FRONTAGE: 12.5M

Regency 250 \$612,289

- > Fixed Site Costs
- > Upgraded Façade – Hudson
- > Estate Covenants, Guidelines & Statutory Costs
- > Deluxe carpet with a choice of Porcelain Tiles or Waterproof Engineered flooring
- > 20mm Caesarstone to Kitchen, Ensuite & Bathroom
- > Upgrade of 900mm appliances and Stainless Steel Dishwasher
- > Evaporative Cooling Unit with Smart phone Wi-Fi Control
- > Flyscreens and Window Locks
- > 6 star energy rating*in any orientation
- > Alfresco dining
- > Coloured concrete to driveway and porch up to 36m²



Call Molly Trapnell on 0403 242 060 to discuss your new home at St Germain.
stgermain.net.au

©Copyright. Reproduction without authorisation from Bentley Homes (Aust) Pty Ltd is prohibited. All images and plans are for illustrative purposes and should only be used as a guide only. Refer to the working drawings for complete dimensions. Based on standard home and builder's preferred siting. Excludes legal fees relating to building contract and excludes land acquisition charges. Bentley Homes (Aust) Pty Ltd reserves the right to alter prices & specification without notice.