



**St.GERMAIN**  
a place like no other



Pricing excludes. Landscaping, fencing, window and door treatments, furnishing, driveway, external lighting & window furnishing, developer required corner treatment (if applicable) and/or acoustic overlay requirements (if applicable). See a Fairhaven consultant for more information.

**LOT 1420**

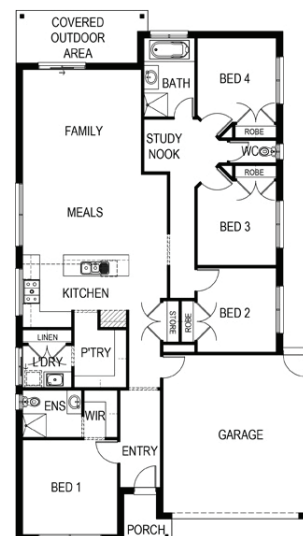


**LAND SIZE: 400m<sup>2</sup> 21.91sq FRONTAGE: 12.5m**

## **LENNOX 219**

# **\$587,516\***

- Fixed Site Costs
- Developers Guidelines
- Colorbond Roof
- Flooring Throughout
- Low Profile Evaporative Cooler
- \$3000 Spend in Street Appeal to upgrade your Façade



Call Jennifer Chua on 0455226316  
to discuss your new home at St Germain.  
[stgermain.net.au](http://stgermain.net.au)