



St.GERMAIN
a place like no other



LOT 1416 4 2 2

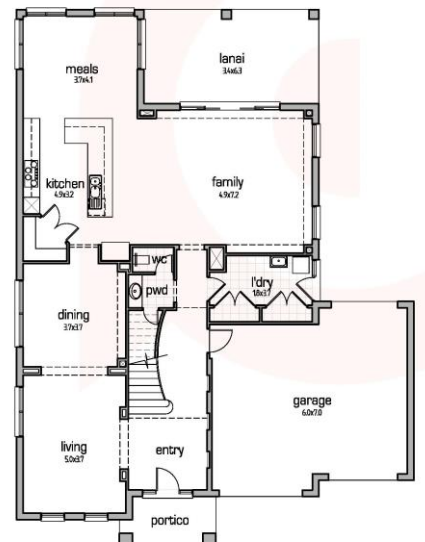
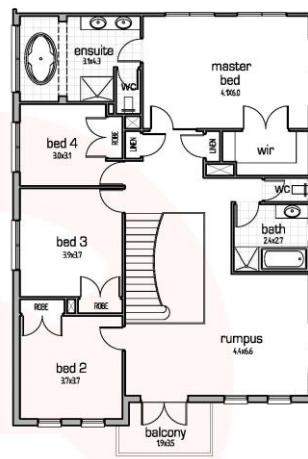
LAND SIZE: 561SQM

FRONTAGE: CNR

BELLEVUE 361

\$787,900

- > 6 Star Energy Rating
- > Concrete Roof Tiles
- > Face Brickwork & Mouldings to Front Façade
- > Vinyl Wrap Cabinetry
- > Ceramic Tiles to Entry, Kitchen, Meals & wet areas
- > Carpet to Living, Dining, Rumpus & Bedrooms
- > Sectional Panel Lift Garage Door with Remote to front, roller door to rear
- > Quality Stainless Steel Appliances
- > LED Downlights throughout



Contact **Erik Lange** on **0412 698 485** or **erik.lange@cheviothomes.com.au** to discuss your new home at St Germain. stgermain.net.au

DISCLAIMER: Cheviot Homes Pty Ltd reserves the right to alter inclusions as part of ongoing product development without written notice. Government building guide lines may apply. Site specific building controls and/or conditions may vary standard inclusions to satisfy foundation designs, 6 star energy requirements and BAL ratings. All package pricing is dependent upon current land availability and specific site costs that may apply to each individual allotment. Unless specified, all house and land packages do not include government stamp duty and/or associated legal costs. All package prices quoted are based on standard inclusions and do not include and current promotions and/or additional options that may be available or offered at our display centre.