



St.GERMAIN
a place like no other



LOT 1401 4 🚗 2 🏠 2 🚗

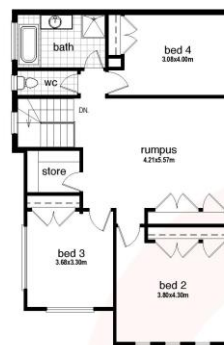
LAND SIZE: 675SQM

FRONTAGE: 13.09M

CLOVELLY 340 C

\$851,500

- > 2550mm Ceilings to Ground Floor, 2400mm to First Floor
- > Tiled Roof Covering
- > Face brickwork & feature panelling to Front Façade
- > Quality Tiles to Entry, Kitchen, Meals & wet areas
- > Quality Carpet from Builder's Range
- > Slimline Panel Lift Garage Door with Remote
- > Stainless Steel Appliances
- > LED Downlights Throughout



UPPER FLOOR LAYOUT




CHEVIOT
HOMES

Call **Erik Lange** on **0412 698 485** or
email erik.lange@cheviothomes.com.au
to discuss your new home at St Germain.
stgermain.net.au

DISCLAIMER: Cheviot Homes Pty Ltd reserves the right to alter inclusions as part of ongoing product development without written notice. Government building guide lines may apply. Site specific building controls and/or conditions may vary standard inclusions to satisfy foundation designs, 6 star energy requirements and BAL ratings. All package pricing is dependent upon current land availability and specific site costs that may apply to each individual allotment. Unless specified, all house and land packages do not include government stamp duty and/or associated legal costs. All package prices quoted are based on standard inclusions and do not include and current promotions and/or additional options that may be available or offered at our display centre.