



St.GERMAIN
a place like no other



LOT 1416 5 🚗 2 🏠 2 🚗

LAND SIZE: 561SQM

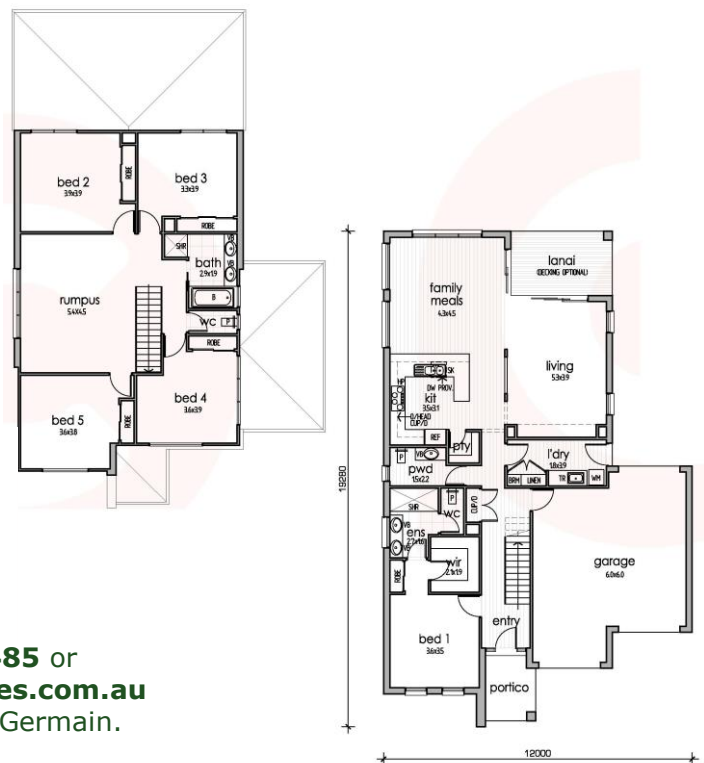
FRONTAGE: CNR

COVENTRY IV \$724,000

- > 2700mm High Ceilings to Bottom Floor
- > Colourbond Roof Covering
- > Feature Panelling and face brickwork to Front Façade
- > Timber Laminate flooring to Entry, Kitchen & Meals
- > Quality Tiles to wet areas
- > Quality Carpet to Living and Bedrooms
- > Sectional Panel Lift Garage Door with Remote
- > 900mm Stainless Steel Appliances
- > LED Downlights Throughout



Call **Erik Lange** on **0412 698 485** or
email erik.lange@cheviothomes.com.au
to discuss your new home at St Germain.
stgermain.net.au



DISCLAIMER: Cheviot Homes Pty Ltd reserves the right to alter inclusions as part of ongoing product development without written notice. Government building guide lines may apply. Site specific building controls and/or conditions may vary standard inclusions to satisfy foundation designs, 6 star energy requirements and BAL ratings. All package pricing is dependent upon current land availability and specific site costs that may apply to each individual allotment. Unless specified, all house and land packages do not include government stamp duty and/or associated legal costs. All package prices quoted are based on standard inclusions and do not include and current promotions and/or additional options that may be available or offered at our display centre.