



**St.GERMAIN**  
a place like no other



# BURNLEY 220

**LOT 1708** 4 2 2

LAND SIZE: 540SQM

FRONTAGE: 16.44m

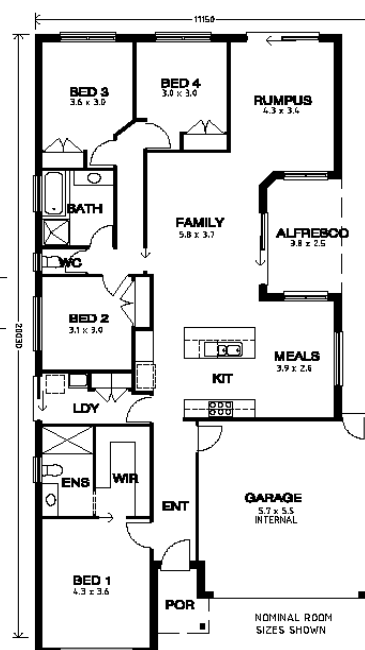
- > **Price: From \$674370**
- > **Residence Size: 17.04sq**
- > **Total Size: 22.06sq**
- > House mirrored to suit block
- > Large block in top quality estate
- > \$25k site costs
- > 6 Star energy rating
- > Premier Custom inclusions
- > All upgrades included

**BURNLEY 220 - 4 bed**  
side alfresco



AREA ANALYSIS	
RESIDENCE	158.30m <sup>2</sup> - 17.04sq
GARAGE	24.37m <sup>2</sup> - 2.70sq
PORTICO	2.66m <sup>2</sup> - 0.31sq
ALFRESCO	9.41m <sup>2</sup> - 1.01sq
<b>TOTAL AREA</b>	<b>204.96m<sup>2</sup> - 22.06sq</b>

1 : 100



Call [Wayne Colomb] on [0404 263 995]  
to discuss your new home at St Germain.  
stgermain.net.au