



**St.GERMAIN**  
a place like no other



Images for illustrative purposes only & may depict upgrade options available at additional charges such as lighting, window furnishings, timber look garage door & timber windows. Pricing also excludes features not supplied by Carlisle, inc fencing, landscaping, letterbox, decking & driveway. Façade details inc entry door, window sizes & placements may vary between house types & sizes. Refer to working drawings for specific locations and sizes.

**LOT 1421** **4** **2** **2** **LAND SIZE:400m<sup>2</sup> 21.96sq** **FRONTAGE:12.5m**

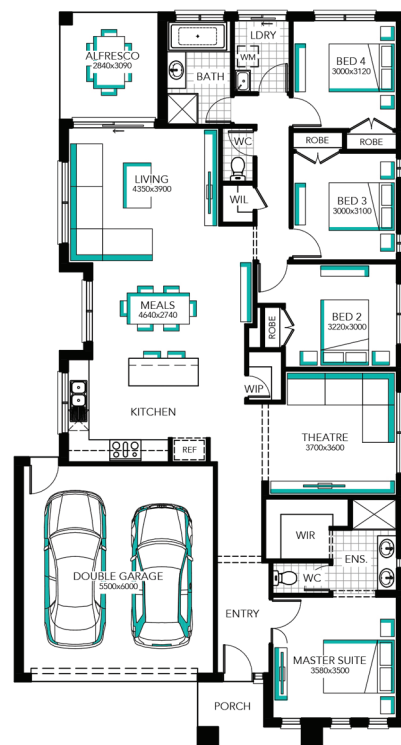
# EDGEWOOD 23

## \$574,900\*

- FIXED PRICE SITE COSTS AND CONNECTIONS
- DEVELOPER AND COUNCIL REQUIREMENTS
- 6 STAR ENERGY RATING
- 2590MM HIGH CEILINGS TO GROUND FLOOR
- WALK IN ROBES TO MASTER BEDROOM
- FEATURE DESIGNER ACRYLIC BATH (HOME DESIGN SPECIFIC)



Call Robert Zsiga on 0423 633 181  
to discuss your new home at St Germain.  
[stgermain.net.au](http://stgermain.net.au)



Applies to EasyLiving series only. \*Pricing based on Developer supplied engineering plans & Plan of Subdivision; Carlisle standard floor plan with preferred siting (without alterations), Carlisle's recommended Building Surveyor & residential zoning at the package date. Subject to developer & council approval. Internal dimensions of Hebel homes may be smaller than dimensions shown on the floorplan due to the external wall thickness - see working drawings for Hebel home dimensions. Package price does not include any stamp duty, government, legal or bank charges. Alterations made may incur additional charges. Carlisle reserves the right to withdraw or amend pricing, inclusions and promo without notice. See a sales consultant for further details. Refer [www.carlislehomes.com.au/easyliving/disclaimer](http://www.carlislehomes.com.au/easyliving/disclaimer) for full details. © 2018 Carlisle Homes Pty Ltd. ABN 86 106 263 209. Registered Building Practitioner CDB-U50143.