



**St.GERMAIN**  
a place like no other

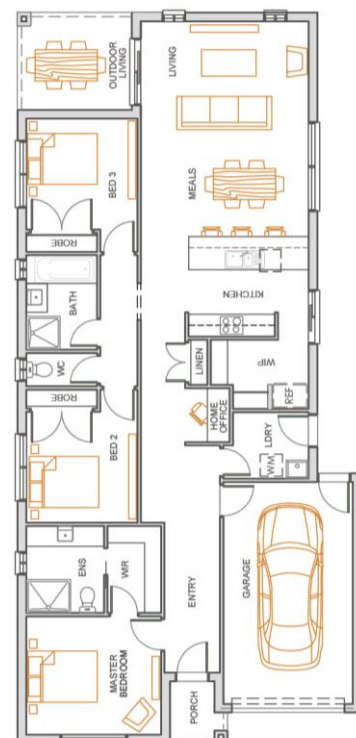


**LOT 1207** 3 🚗 2 🏠 1 🚗

LAND SIZE: 336SQM FRONTAGE: 12.5M

## **Bondi 18MK3** **\$499,290**

- ✓ 20mm stone benchtop to kitchen
- ✓ Fisher and Paykel appliances including dishwasher!!
- ✓ Tiled kitchen splash back
- ✓ LED downlights through main living area
- ✓ Coloured Concrete Driveway
- ✓ Site cost allowance
- ✓ FREE SOLAR AND EVAP COOLING!!



**beachwood**  
constructions

Call Belinda Jackson on 0425 853 625 to discuss your new home at St Germain.  
[stgermain.net.au](http://stgermain.net.au)