



**St.GERMAIN**  
a place like no other

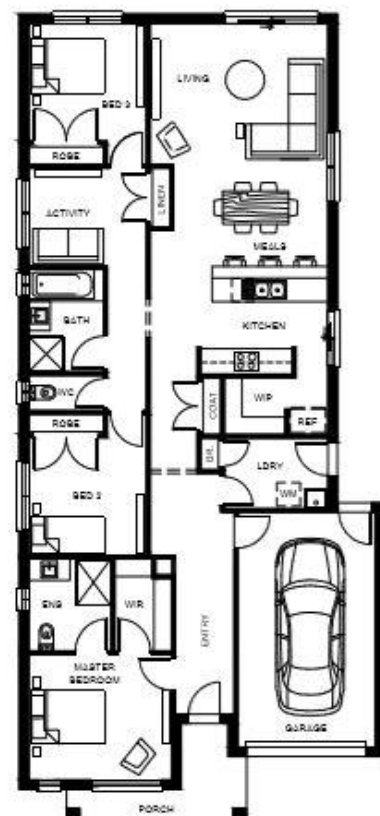


**LOT 1207** 3 2 1

LAND SIZE: 336SQM FRONTAGE: 10.5M

## BONDI 18 - \$491,890\*

- 20mm stone to kitchen benchtop
- Tiled kitchen splashback
- Soft close draws throughout
- Overhead cupboards
- Flooring
- Fisher and Paykel Appliances including dishwasher!!
- All flooring
- Remote control lift garage door
- Flyscreens & window locks
- LED downlights to living area
- TV antenna connected
- AND MUCH MORE



**Beachwood**  
HOMES

Call **BELINDA JACKSON** on 0425 853 625 to discuss your new home at St Germain.  
[stgermain.net.au](http://stgermain.net.au)