



**St.GERMAIN**  
a place like no other



**LOT 1802**

4 2.5 2

LAND SIZE: 392 SQM

FRONTAGE: 14m

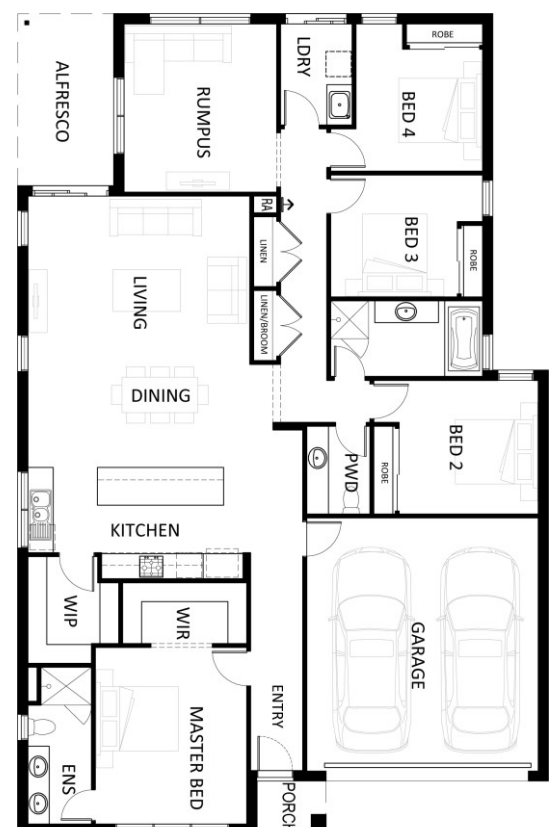
## Tallow 24 \$581,029

- > Site cost allowance
- > Facade as shown
- > Flooring throughout
- > 600mm Stainless steel appliances
- > Chrome mixer taps throughout
- > Double glazed windows
- > Soft close hardware on kitchen cabinetry
- > Ducted heating throughout
- > Motorise garage door with remote



**SIENNA  
HOMES**  
MAKING ROOM FOR LIFE

Call Sienna Homes on 1800 SIENNA to discuss your new home at St Germain.  
[stgermain.net.au](http://stgermain.net.au)



Facade shows items not included, front landscaping, driveway, external lighting, decking or tiled porch, planter boxes and potted plants, internal furnishings, feature fencing and letterbox. For complete list of inclusions please refer to [siennahomes.com.au](http://siennahomes.com.au)